



# LANA GROSSA

## INSIEME Art. 1611

50 % Schurwolle (Merino), Virgin Wool (Merino)  
 20 % Mohair, Mohair  
 20 % Alpaka, Alpaca  
 10 % Polyamid, Polyamide



10 x 50 g



ca. 75 m  
per 50 g



7-8



10 x 10 cm



16 R

12 M



Gr. 38-40  
ca. 550 g



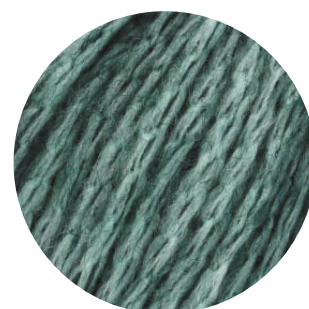
1



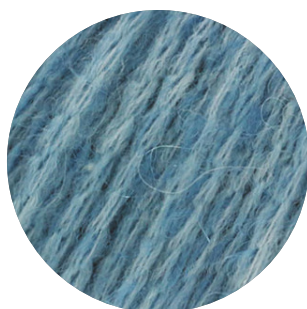
2



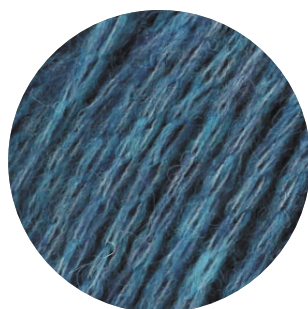
3



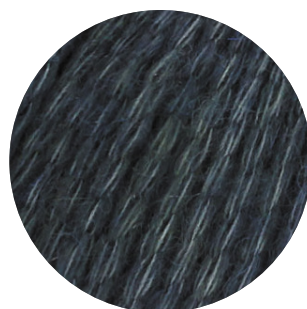
4



5



6



7



8



9



10



11



12

**LANA GROSSA GmbH**

Ingolstädter Straße 86 · 85080 Gaimersheim · Tel. +49 (0)8458 61-0 · Fax +49 (0)8458 61-36 · [www.lanagrossa.de](http://www.lanagrossa.de)



# LANA GROSSA

## INSIEME Art. 1611

50 % Schurwolle (Merino), Virgin Wool (Merino)  
 20 % Mohair, Mohair  
 20 % Alpaka, Alpaca  
 10 % Polyamid, Polyamide



10 x 50 g



ca. 75 m  
per 50 g



7-8



10 x 10 cm



16 R

12 M



Gr. 38-40  
ca. 550 g



13



14