



# LANA GROSSA

**lala** HARMONY Art. 1563  
BERLIN  
LANA GROSSA

56 % Alpaka (Baby), Alpaca (Baby)  
20 % Baumwolle, Cotton  
14 % Polyamid, Polyamide  
10 % Schurwolle (Merino), Virgin Wool (Merino)



10 x 50 g



ca. 150 m  
per 50 g



5,5-6

10 x 10 cm



20 R

14 M



Gr. 38-40  
ca. 250-300 g



1



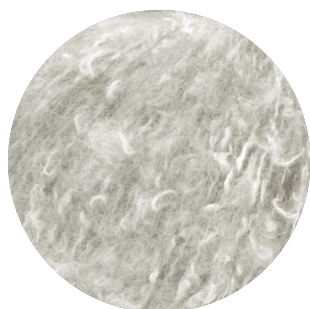
2



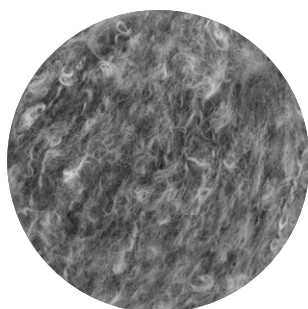
3



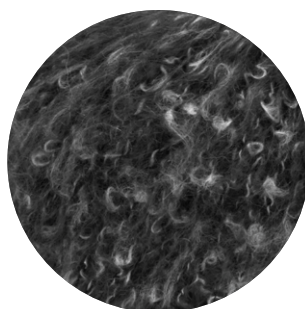
4



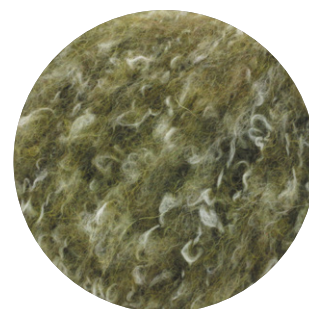
5



6



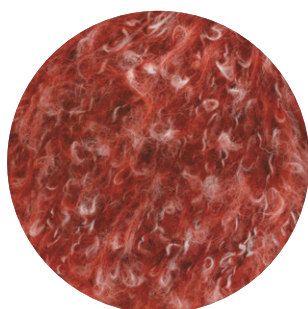
7



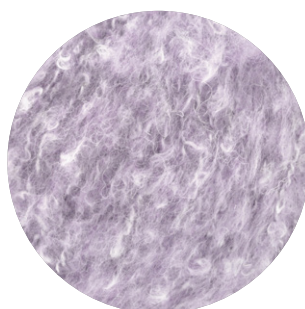
8



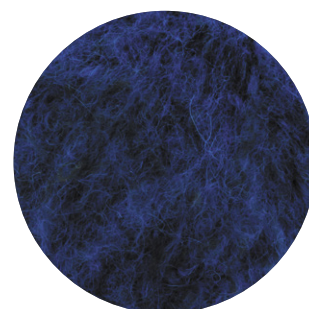
9



10



11



12

**LANA GROSSA GmbH**

Ingolstädter Straße 86 · 85080 Gaimersheim · Tel. +49 (0)8458 61-0 · Fax +49 (0)8458 61-36 · [www.lanagrossa.de](http://www.lanagrossa.de)