

# LANA GROSSA

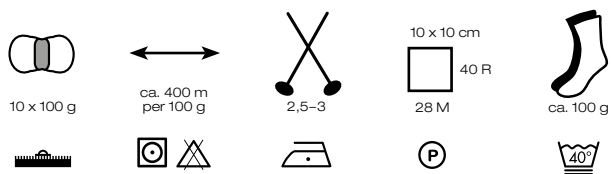
## MEILENWEIT 100

**WOOLYCELL** Art. 1424

65 % Schurwolle (Merino), Virgin Wool (Merino)

35 % Lyocell, Lyocell

waschmaschinenfest, machine washable



1



2



3



4



5



6



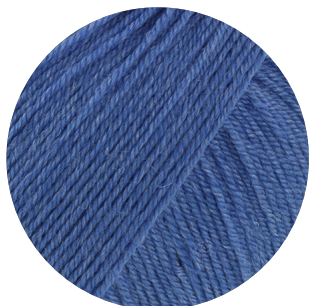
7



8



9



10



**LANA GROSSA GmbH**

Ingolstädter Straße 86 · 85080 Gaimersheim · Tel. +49 (0)8458 61-0 · Fax +49 (0)8458 61-36 · [www.lana-grossa.de](http://www.lana-grossa.de)

# LANA GROSSA

## MEILENWEIT 100 WOOLYCELL DUO Art. 1425

65 % Schurwolle (Merino), Virgin Wool (Merino)  
35 % Lyocell, Lyocell

waschmaschinenfest, machine washable



10 x 100 g



ca. 400 m  
per 100 g



2,5-3

10 x 10 cm

40 R

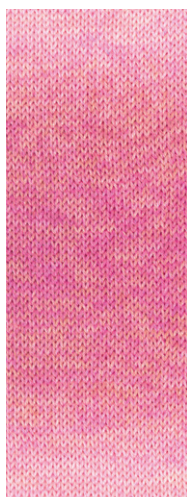
28 M



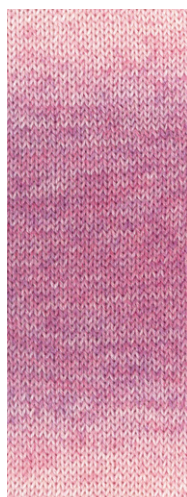
ca. 100 g



6001



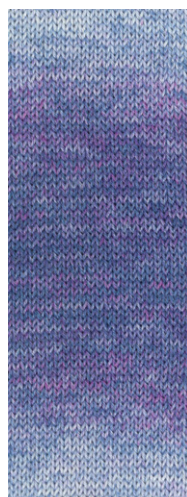
6002



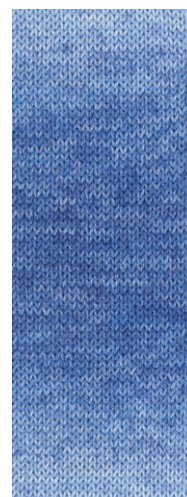
6003



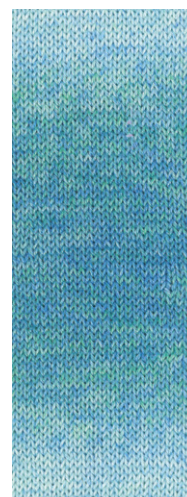
6004



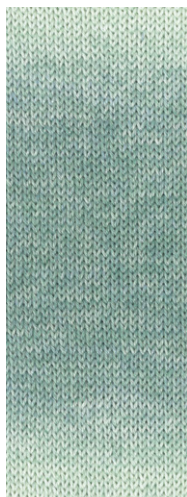
6005



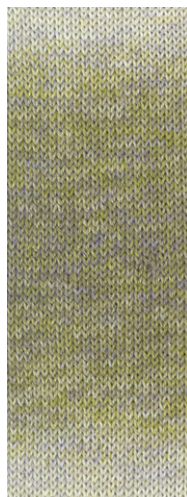
6006



6007



6008



6009



6010

