



# LANA GROSSA

**lala** BERLIN LANA GROSSA  
**LALA BERLIN TWEEDY** Art. 1565

33 % Alpaka (Baby), Alpaca (Baby)  
 31 % Baumwolle, Cotton  
 30 % Polyamid, Polyamide  
 6 % Schurwolle (Merino), Virgin Wool (Merino)



10 x 50 g



ca. 120 m  
per 50 g



4-5

10 x 10 cm

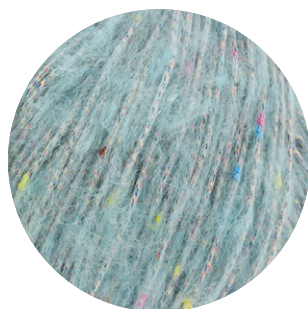


22 R

16 M



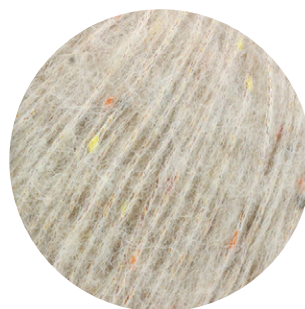
Gr. 38-40  
ca. 400-450 g



1



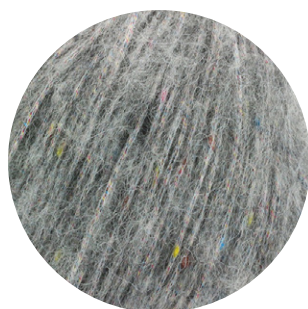
2



3



4



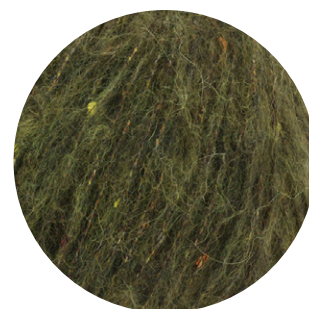
5



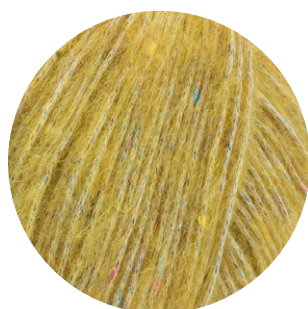
6



7



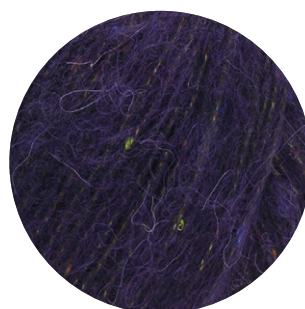
8



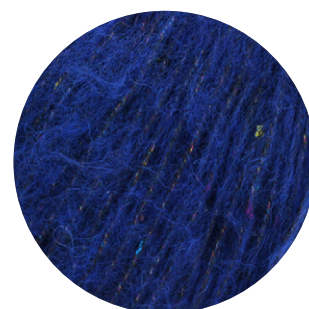
9



10



11



12

**LANA GROSSA GmbH**

Ingolstädter Straße 86 · 85080 Gaimersheim · Tel. +49 (0)8458 61-0 · Fax +49 (0)8458 61-36 · [www.lanagrossa.de](http://www.lanagrossa.de)