



LANA GROSSA

SARA Art.1394

65 % Baumwolle, Cotton
 30 % Alpaka (Baby), Alpaca (Baby)
 5 % Schurwolle (Merino), Virgin Wool (Merino)



10 x 50 g



ca. 125 m
 per 50 g



5-5,5



10 x 10 cm

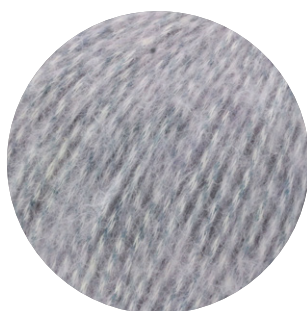


22 R

18 M



Gr. 38-40
 ca. 350-400 g



1



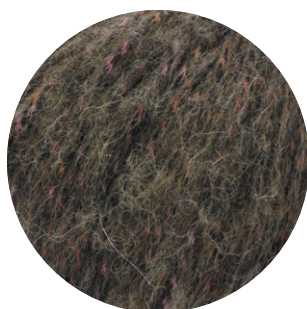
2



3



4



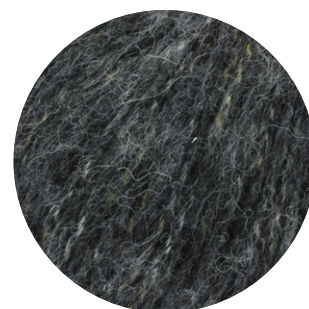
5



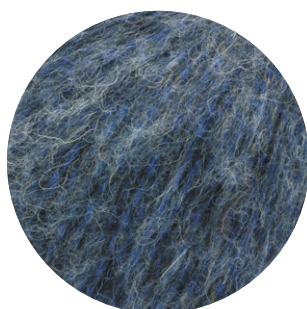
6



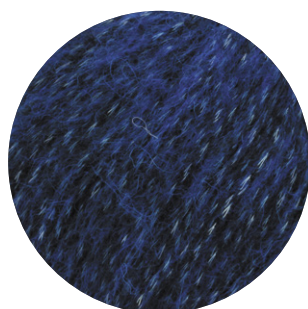
7



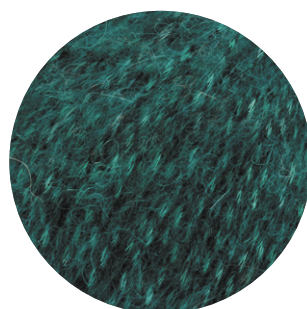
8



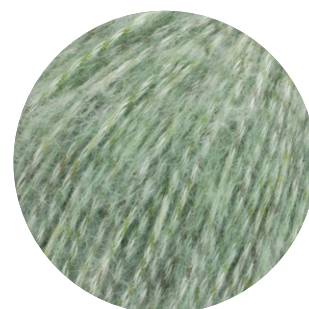
9



10



11



12

LANA GROSSA GmbH

Ingolstädter Straße 86 · 85080 Gaimersheim · Tel. +49 (0)8458 61-0 · Fax +49 (0)8458 61-36 · www.lanagrossa.de



LANA GROSSA

SARA Art.1394

65 % Baumwolle, Cotton
 30 % Alpaka (Baby), Alpaca (Baby)
 5 % Schurwolle (Merino), Virgin Wool (Merino)



10 x 50 g



ca. 125 m
 per 50 g



5-5,5

10 x 10 cm



22 R

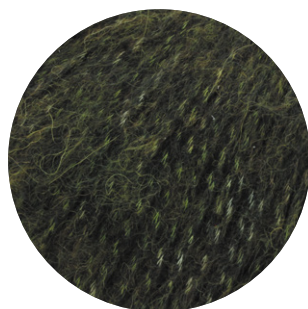
18 M



Gr. 38-40
 ca. 350-400 g



13



14

LANA GROSSA GmbH

Ingolstädter Straße 86 · 85080 Gaimersheim · Tel. +49 (0)8458 61-0 · Fax +49 (0)8458 61-36 · www.lanagrossa.de