

## Article

### AIRY

42% Baby Alpaca, 40% Cotton,  
18% Virgin Wool Merino extrafine

### ALPACA AIR

62% Baby Alpaca, 27% Polyamide, 11% Virgin Wool Merino fine

### ALPINA Landhauswolle

80% Virgin Wool, 20% Polyamide

### ALTA MODA ALPACA

90% Baby Alpaca, 5% Virgin Wool Merino, 5% Polyamide

### ALTA MODA CASHMERE 16

78% Virgin Wool Merino extrafine, 12% Cashmere,  
10% Polyamide - mulesing free



### ALTA MODA COTOLANA

45% Pima Cotton, 45% Virgin Wool Merino, 10% Polyamide

### AVIO

63% Alpaca fine, 37% Polyamide

### BASTA

50% Virgin Wool Merino, 50% Polyamide - mulesing free



### BELLA

35% Cotton, 25% Baby Alpaca,  
30% Nylon, 10% Virgin Wool Merino

### BINGO – uni & mélange

100% Virgin Wool Merino extrafine – mulesing free



### BRIGITTE No. 2

47% Baby Alpaca, 45% Cotton,  
8% Virgin Wool Merino

**Brigitte**

### BRIGITTE No. 3

57% Virgin Wool Merino extrafine,  
20% Super Kid Mohair, 23% Polyamide

**Brigitte**

### BRIGITTE No. 5

100% Virgin Wool Merino

**Brigitte**

### BRILLINO

83% Viscose, 17% Metallic fiber

### CASHMERE 16 FINE

80% Virgin Wool Merino extrafine, 10% Cashmere,  
10% Polyamide - mulesing free



### CASHMERE KISS

70% Virgin Wool Merino Superfine,  
30% Cashmere - mulesing free



### CASHMERE PURE

100% Cashmere

### CHRISTMAS EDITION

60% Virgin Wool, 40% Polyacrylic

### AKTION COLORATO

50% Virgin Wool Merino, 50% Premium Acrylic

### COLORISSIMO

100% Virgin Wool Merino extrafine

### COLORS FOR YOU

55% Virgin Wool, 45% Polyacrylic

### CONFETTI

100% Virgin Wool Merino

### COOL MERINO - uni, print & dégradé

90% Virgin Wool Merino, 10% Polyamide

### COOL MERINO Color

90% Virgin Wool Merino, 10% Polyamide

### COOL MERINO BIG - uni & color

90% Virgin Wool Merino, 10% Polyamide

## Countries of origin Quality

### Location

The proportion of synthetic fibers comes exclusively from Europe

### Baby Alpaca: Peru | Cotton: Turkey |

### Virgin Wool: South America

Central Italy: Florence

### Alpaca: Peru | Virgin Wool: Europe

Central Italy: Florence

### South America

Northern Italy: Biella

### Alpaca: Peru | Virgin Wool: South America

Central Italy: Florence

### Virgin Wool: Australia | Cashmere: Tibet

Central Italy: Florence

### Cotton: Turkey | Virgin Wool: South America

Central Italy: Florence

### Peru

Northern Italy: Biella

### Australia

Central Italy: Florence

### Cotton: Turkey | Baby Alpaca: Peru |

### Virgin Wool Merino: South Africa

Central Italy: Florence

### Australia

Central Italy: Florence

### Alpaca: Peru | Cotton: Egypt |

### Virgin Wool: South America

Central Italy: Florence

### Mohair: South Africa |

### Virgin Wool: South America

Central Italy: Florence

### South America

Central Italy: Florence

### Europe

Central Italy: Florence

### Virgin Wool: Australia | Cashmere: Tibet

Central Italy: Florence

### Virgin Wool: Australia | Cashmere: China

Northern Italy: Biella

### China

Northern Italy: Biella

### South America

Northern Italy: Biella

### South America

Europe

### South America

Central Italy: Florence

### South America

Northern Italy: Biella

### South America

Central Italy: Florence

### South Africa

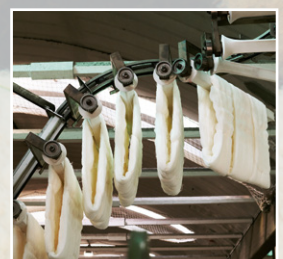
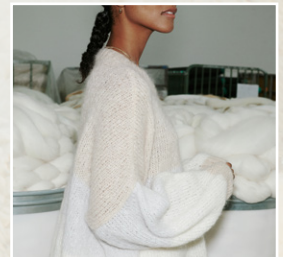
Central Italy: Florence

### South America

Central Italy: Florence

### South Africa

Central Italy: Florence





## Article

### COOL WOOL – uni, print & mélange

100% Virgin Wool Merino extrafine – mulesing free



### COOL WOOL 4 SOCKS - uni, print & print II

75% Virgin Wool Merino, 25% Polyamide

### COOL WOOL BABY – uni, print punto & dégradé

100% Virgin Wool Merino extrafine – mulesing free



### COOL WOOL BIG – uni & mélange

100% Virgin Wool Merino extrafine – mulesing free



### COOL WOOL BIG COLOR

100% Virgin Wool Merino

### COOL WOOL BIG DÉGRADÉ

100% Virgin Wool Merino extrafine

### COOL WOOL VINTAGE / BIG VINTAGE

100% Virgin Wool Merino extrafine - mulesing free



### COOL WOOL LACE

100% Virgin Wool Merino extrafine - mulesing free



### COOL WOOL SETA

80% Virgin Wool Merino extrafine, 20% Silk

### COTTON WOOL

53% Virgin Wool Merino extrafine,  
47% Cotton - mulesing free



### ECOPUNO

72% Cotton, 17% Virgin Wool Merino,  
11% Baby Alpaca - mulesing free

### ECOPUNO CHUNCKY

48% Cotton, 33% Virgin Wool Merino extrafine,  
19% Baby Alpaca - mulesing free

### FELTRO - uni, print, Macchiato

100% Virgin Wool

### GIGANTE

70% Alpaca Fine, 30% Polyamide

### GOMITOLO ARTE

60% Virgin Wool, 40% Polyacrylic

### GOMITOLO FUSIONE

60% Virgin Wool, 40% Polyacrylic

### GOMITOLO GALA

60% Virgin Wool, 38% Polyacrylic, 2% Polyester

### GOMITOLO MAGICO

60% Virgin Wool, 40% Polyacrylic

### GOMITOLO VERSIONE

60% Virgin Wool, 40% Polyacrylic

### LALA BERLIN LOVELY COTTON

75% Virgin Wool Merino extrafine,  
25% Cotton - mulesing free



### LANDLUST ALPAKA MERINO 160

50% Virgin Wool Merino, 50% Baby Alpaca



### LANDLUST DIE FILZWOLLE

100% Virgin Wool



### LANDLUST DIE SOCKENWOLLE

80% Virgin Wool Merino, 20% Polyamide



### LANDLUST WINTERWOLLE

50% Virgin Wool Merino, 35% Cotton,  
15% Yak - mulesing free



### LANDLUST SOFT TWEED 90 / 180

100% Virgin Wool - mulesing free



## Countries of origin Quality

### Location

The proportion of synthetic fibers comes exclusively from Europe

### Australia

Northern Italy: Biella

### South America

Central Italy: Florence

### Australia

Northern Italy: Biella

### Australia

Northern Italy: Biella

### South America

Northern Italy: Biella

### South America

Northern Italy: Biella

### Australia

Europe

### Australia

Northern Italy: Biella

### Virgin Wool: South America | Silk: China

Northern Italy: Biella

### Virgin Wool: Australia | Cotton: Turkey

Northern Italy: Biella

### Cotton: Egypt | Virgin Wool: Australia | Alpaca: Peru

Central Italy: Florence

### Cotton: Europe | Virgin Wool: Australia | Alpaca: Peru

Central Italy: Florence

### South America

Central Italy: Florence

### Peru

Northern Italy: Biella

### Virgin Wool: South America

Northern Italy: Biella

### South America

Northern Italy: Biella

### South America

Northern Italy: Biella

### South America

Northern Italy: Biella

### South America

Northern Italy: Biella

### Virgin Wool: Australia | Cotton: Europe

Central Italy: Florence

### Virgin Wool: South America | Alpaca: Peru

Central Italy: Florence

### South America

Central Italy: Florence

### South America

Northern Italy: Biella

### Virgin Wool: Australia | Cotton: Europe | Yak: China

Central Italy: Florence

### Australia

Northern Italy: Biella





## Article

### LUCIDA

58% Virgin Wool Merino, 42% Viscose - mulesing free



### MEILENWEIT 50g CASHMERE - uni, Piccolo

70% Virgin Wool superwash, 25% Polyamide, 5% Cashmere

### MEILENWEIT 100 - Monte, Rainbow, Bormio, Carezza

75% Virgin Wool, 25% Polyamide

### MEILENWEIT 100 - Punto

80% Virgin Wool, 20% Polyamide

### MEILENWEIT 100 - Confettini, Spots, Dusk

80% Virgin Wool Merino, 20% Polyamide - mulesing free



### MEILENWEIT 6- FACH ALPAKA

50% Alpaca, 20% Virgin Wool Merino, 30% Polyamide

### MEILENWEIT ALPAKA - uni & print

70% Alpaca, 30% Polyamide

### MEILENWEIT 100 CASHMERE

70% Virgin Wool Merino, 25% Polyamide, 5% Cashmere

### MEILENWEIT CASHMERE HAWAII

70% Virgin Wool, 25% Polyamide, 5% Cashmere

### MEILENWEIT 100/150 CHRISTMAS

80% Virgin Wool Merino, 20% Polyamide

### MEILENWEIT MERINO EXTRAFINE - uni, Cosy, Soft

75% Virgin Wool Merino extrafine, 25% Polyamide

### MEILENWEIT SETA - uni, Asia, Cina

55% Virgin Wool Merino, 25% Polyamide, 20% Silk

### AKTION MERINO SOFT

50% Virgin Wool Merino, 50% Acrylic

### MERINO LACE AQUARELL

100% Virgin Wool Merino extrafine - mulesing free



### MERINO SUPERIORE

100% Virgin Wool Merino extrafine - mulesing free



### MERINO TWISTER

70% Virgin Wool Merino superwash, 30% Acrylic

### MERINO UNO

100% Virgin Wool Merino - mulesing free



### MILLE II

50% Virgin Wool Merino extrafine,  
50% Polyacryl - mulesing free



### MOHAIR MODA

70% Kid Mohair, 20% Virgin Wool Merino superfine,  
10% Polyamide

### NATURAL ALPAKA CLASSICO

85% Baby Alpaca, 15% Virgin Wool Merino

### NATURAL ALPAKA LUNGO

89% Baby Alpaca, 11% Polyamide

### NATURAL ALPAKA PELO

63% Cotton, 31% Baby Alpaca, 6% Virgin Wool Merino

### NATURAL LAMA CHUNKY

100% Baby Lama

### NATURAL LAMA FINE

100% Baby Lama

### NATURAL SUPERKID TWEED

60% Super Kid Mohair, 30% Silk, 7% Cotton

## Countries of origin Quality

### Location

The proportion of synthetic fibers comes exclusively from Europe

### Virgin Wool: Australia

Europe

### Virgin Wool: South America | Cashmere: China

Northern Italy: Biella

### South America

Central Italy: Florence

### South America

Northern Italy: Biella

### Australia

India

### Alpaca: Peru | Virgin Wool: South America

Europe

### Peru

Central Italy: Florence

### Virgin Wool: South America | Cashmere: Tibet

Northern Italy: Biella

### Virgin Wool: South America | Cashmere: China

Northern Italy: Biella

### South America

Northern Italy: Biella

### South America

Northern Italy: Biella

### Virgin Wool: South America | Silk: China

Northern Italy: Biella

### South America

Northern Italy: Biella

### Australia

India

### Australia

Northern Italy: Biella

### Peru

Europe

### Australia

Northern Italy: Biella

### Australia

Northern Italy: Biella

### Mohair: South Africa |

### Virgin Wool: South America

Central Italy: Florence

### Alpaca: Peru | Virgin Wool: South America

Central Italy: Florence

### Alpaca: Peru

Central Italy: Florence

### Cotton: Turkey | Alpaca: Peru |

### Virgin Wool: Europe

Central Italy: Florence

### South America

Bolivia

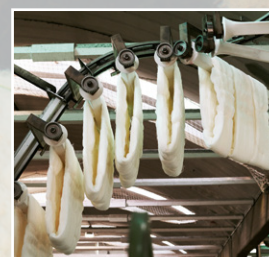
### South America

Bolivia

### Mohair: Europe | Silk: China |

### Cotton: Europe

Central Italy: Florence





## Article

### NEW CLASSIC

48% Virgin Wool Merino, 36% Viscose (Bamboo),  
8% Yak, 8% Nylon -mulesing free



### PER FORTUNA

74% Bio Cotton, 26% Polyamide - GOTS certified



### PER LEI

100% Virgin Wool Merino - GOTS certified



### PICASSO

36% Virgin Wool Merino extrafine, 36% Baby Alpaca,  
28% Polyamide

### PURO VEGANO

65% Cotton, 20% Lyocell (Tencel), 15% Polyamide

### ROYAL ALPACA

93% Alpaca Royal, 7% Polyamide

### SETASURI

69% Alpaca Suri, 31% Silk

### SETOSA

65% Virgin Wool Merino superfine, 35% Silk

### SILKHAIR - uni & print

70% Super Kid Mohair, 30% Silk

### SOFFIO

60% Virgin Wool Merino superfine, 30% Bio Cotton,  
10% Cashmere

### SPUMA

80% Virgin Wool Merino superfine,  
20% Polyamide - mulesing free



### SUPERKID SETA

65% Mohair Superkid, 35% Silk

### THE CORE

50% Cotton, 50% Polyester

### THE LOOK FINE

100% Polyester

### THE PAPER

70% Polyester, 30% Viscose

### THE TUBE

60% Cotton, 40% Nylon

### THE TUBE FINE

75% Cotton, 25% Nylon

### TWINNY

97% Virgin Wool Merino extrafine, 3% Polyamide

### VINTAGE CHUNKY

100% Virgin Wool Merino - mulesing free



### VINTAGE SUPERCHUNKY

100% Virgin Wool Merino - mulesing free



### VINTAGE SOCKS

75% Virgin Wool Merino, 25% Polyamide - mulesing free



## Countries of origin Quality

### Location

The proportion of synthetic fibers comes exclusively from Europe

### Virgin Wool: Australia | Yak: China

Central Italy: Florence

### Turkey

Central Italy: Florence

### South America

Northern Italy: Biella

### Virgin Wool: South America | Alpaca: Peru

Central Italy: Florence

### America

Central Italy: Florence

### Peru

Northern Italy: Biella

### Alpaca Suri: Peru | Silk: China

Central Italy: Florence

### South America

Central Italy: Florence

### Mohair: South Africa | Silk: China

Central Italy: Florence

### Virgin Wool: South America | Cotton: India |

Cashmere: Mongolia

Central Italy: Florence

### Australia

Central Italy: Florence

### Mohair: South Africa | Silk: China

Central Italy: Florence

### Turkey

Europe

### Europe

Europe

### Europe

Europe

### America

Europe

### America

Europe

### Virgin Wool: South America

Central Italy: Florence

### Australia

Europe

### Australia

Europe

### Australia

Europe

