



© Lana Grossa GmbH

Design 4 – Flyer Confetti

---

**PULLOVER  
CONFETTI**

# PULLOVER · CONFETTI

## Design 4 – Flyer Confetti



**Size** 36/38 (40/42, 44)

Instructions are given for first size. Figures in parenthesis refer to larger sizes. When only one figure is given, it applies to all sizes.

**Materials:** 700 (800, 900) g of Lana Grossa **Confetti** (100% Merino wool; 50 m/100 g) in White/Orange/Salmon/Yellow/Purple/Blue Violet (**col 4**). Size 10 mm needles; one set size 10 mm double-pointed needles [dpns].

**Rib patt:** K2, p2.

**Drop st patt:** Row 1 (RS): Selvage st, \* yo, k1; rep from \*, end selvage st. Row 2 (WS): Purl all sts, dropping all yos. Rep rows 1 and 2 for drop st patt.

**Selvage sts:** K on RS, p on WS.

**Gauge:** 5 sts and 8 rows = 10 x 10 cm in drop st patt on size 10 mm needles.

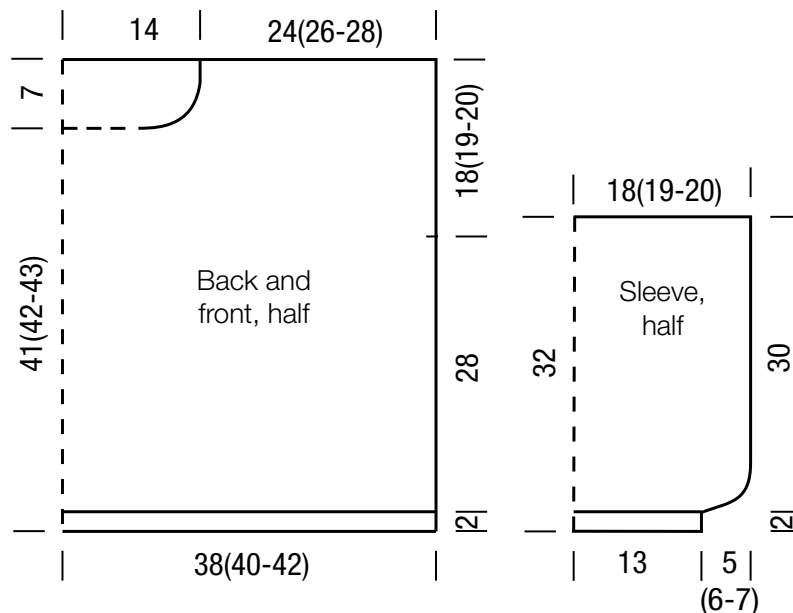
**Back:** Cast on 38 (42, 42) sts using the double stranded long-tail cast on method. P 1 WS row. Next row (RS): Selvage st, p1, \* k2, p2; rep from \* to last 4 sts, k2, p1, selvage st. Next row (WS): Work in rib patt as set by last row, increasing 1 (0, 1) st at each end of row = 40 (42, 44) sts. Work in

drop st patt until piece meas 30 cm from cast-on. Place marker in first and last st on last WS row to indicate beg of armholes. Cont in patt until piece meas 48 (49, 50) cm from cast-on. Bind off all sts.

**Front:** Work same as back until piece meas 41 (42, 43) cm from cast-on, ending with a WS row. Shape neck: Next row (RS): Place center 6 sts on holder. Working each side separately, bind off 2 sts at each neck edge 2 times and when same length as back to shoulders, bind off rem 13 (14, 15) sts for each shoulder.

**Sleeves:** Cast on 18 sts using the double stranded long-tail cast on method. P 1 WS row. Next row (RS): Selvage st, p1, \* k2, p2; rep from \* to last 4 sts, k2, p1, selvage st. Next row (WS): Work in rib patt as set by last row, increasing 2 (3, 4) sts evenly across row = 20 (21, 22) sts. Work in drop st patt until piece meas 32 cm from cast-on. Bind off all sts.

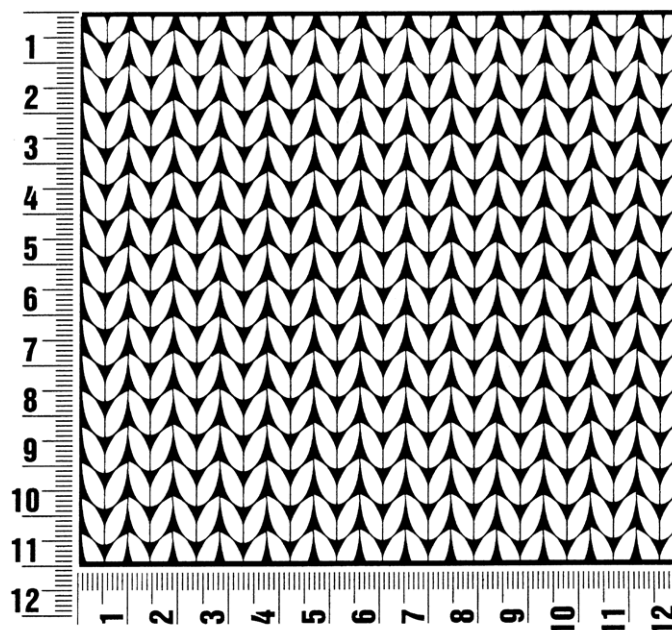
**Finishing:** Pin pieces to measurements and block. Sew shoulder seams. **Neckband:** With dpns, pick up and k 40 sts evenly around neck edge including sts on holder. Arrange sts evenly on 4 needles = 10 sts per needle, place beg of rnd marker and join for working in rnds. Work in rib patt for 2 rnds. Bind off all sts in rib. Sew on sleeves between markers. Sew side and sleeve seams.



## Gauge Swatch

### Before you begin ...

...make a gauge swatch. Use the recommended needles, yarns and pattern stitch for your gauge swatch. It should measure approx. 12 cm x 12 cm. Cast-on and bind-off rows, as well as selvage stitches should not be included in the measurement. Pin your swatch and block it as you would the finished pieces of the garment. Count stitches and rows over 10 cm. If your gauge swatch is too small, switch to larger needles. If your gauge swatch is too big, switch to smaller needles.



## Abbreviations

**beg** = begin(ning) · **ch** = chain · **cont** = continue · **dec** = decreas(e)(ing) · **inc** = increas(e)(ing) · **k** = knit · **kwise** = as if to knit  
**meas** = measures · **M1L** = lift strand between sts from front to back and knit this strand through the back loop · **M1R** = lift strand between sts from the back and knit this strand through the front loop · **patt** = pattern · **pm** = place marker · **p** = purl  
**pwise** = as if to purl · **rem** = remain(ing) · **rep** = repeat(s) · **rev St st** = reverse stockinette stitch · **rnd(s)** = round(s) · **RS** = right side · **sc** = single crochet · **skp** = slip 1 stitch as if to knit, knit 1 stitch, pass slipped stitch over knitted stitch · **sk2p** = slip 1 stitch as if to knit, knit 2 together, pass slipped stitch over knitted stitch · **s2kp** = slip 2 stitches as if to knit, k 1 stitch, pass slipped stitches over knitted stitch · **sl** = slip · **st(s)** = stitch(es) · **St st** = stockinette stitch · **tbl** = through the back loop · **tog** = together · **wyib** = with yarn in back of work · **wyif** = with yarn in front of work · **WS** = wrong side · **yo(s)** = yarn over(s)

### Publisher's Info

**Publisher:** Lana Grossa GmbH, Gaimersheim, [www.lana-grossa.com](http://www.lana-grossa.com)

**Photographer:** Nicolas Olonetzky, [www.olonetzky.com](http://www.olonetzky.com)