



www.lanagrossa.com

PULLOVER · SILKHAIR HAND-DYED
Design 04 - hand-dyed Flyer

PULLOVER · SILKHAIR HAND-DYED

Design 04 - hand-dyed Flyer



Size 36 (38/40, 42)

Instructions are given for first size. Figures in parenthesis refer to larger sizes. When only one figure is given, it applies to all sizes.

Materials: 50 (50-100) g of Lana Grossa **Silkhair hand-dyed** (70% superkid mohair, 30% silk; 400 m/50 g) in Mogra (**col 608**) and 50 (50, 100) g Gulab (**col 610**). Size 4.5 and 5 mm needles; size 5 mm circular needle, 40 cm long.

Rib patt: P2, k2.

Main patt: Work according to chart. Multiple of 2 + 1 + 2 selvage sts (not shown on chart). Numbers at left edge of chart indicate WS rows, numbers at right edge of chart indicate RS rows. Chart begins with a WS row. Rep rows 1 – 4.

Selvage sts: On RS row, ktbl first st, sl last st pwise wyib; on WS row, ptbl first st, sl last st pwise wyif.

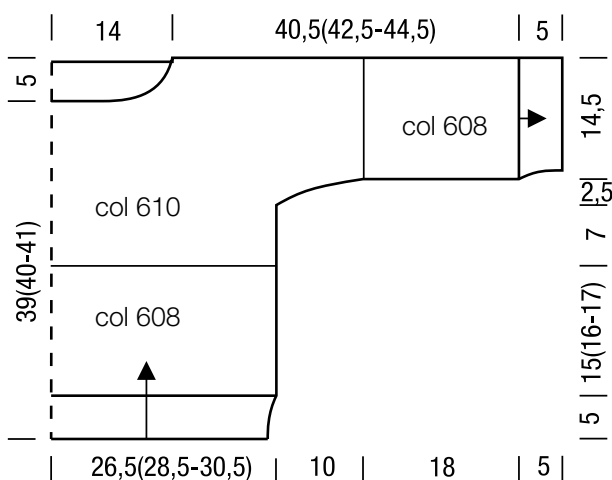
Gauge: 16 sts and 38 rows = 10 x 10 cm in main patt on size 5 mm needles.

Back: With size 4.5 mm needles and Silkhair hand-dyed col 608 cast on 82 (90, 94) sts. Next row (WS): Selvage st, p1, * k2, p2; rep from * to last 4 sts, k2, p1, selvage st. Cont in rib patt as established until piece meas 5 cm from cast-on, increasing 5 (3, 5) sts evenly across last WS row = 87 (93, 99) sts. Change to size 5 mm needles. Next row (RS): Selvage st, work row 1 of main patt chart over next 85 (91, 97) sts as foll: Work 2-st patt rep between arrows 41 (44, 47) times, work to end of chart = 3 sts; selvage st. Cont to follow chart until pie-

ce meas 20 (21, 22) cm from cast-on, ending with a WS row. Drop col 608, join col 610 and cont in main patt until piece meas 27 (28, 29) cm from cast-on, ending with a WS row. Shape sleeves: Cast on 4 sts at beg of next 8 rows = 119 (125, 131) sts. Work cast-on sts into main patt. Next row (RS): With col 606 cast on 29 sts, with col 604 work to end of row, with col 606 cast on 29 sts = 177 (183, 189) sts. Work cast-on sts into main patt. NOTE: Work each block of color with separate ball of yarn. Twist yarns around each other at each color change to prevent holes. Working each block of color with separate ball of yarn, cont in main patt until piece meas 44 (45, 46) cm from cast-on, ending with a WS row. Bind off all sts. Mark center 47 sts for back neck.

Front: Work same as back until piece meas 39 (40, 41) cm from cast-on, ending with a WS row. Shape neck: Next row (RS): Bind off center 27 sts. Working each side separately, bind off 5 sts at each neck edge 1 time, 3 sts 1 time, 2 sts 1 time and when same length as back to shoulders, bind off rem 65 (68, 71) sts for each shoulder/overarm.

Finishing: Pin pieces to measurements and block. Sew shoulder/overarm seams. **Neckband:** With size 5 mm circular needle and Silkhair hand-dyed col 610 pick up and k 92 sts evenly around neck edge. Place beg of rnd marker and join for working in rnds. Work rib patt in rnds for 2.5 – 3 cm. Bind off all sts in rib. **Sleeve cuffs:** With size 4.5 mm needles and Silkhair hand-dyed col 608 pick up and k 54 sts evenly along bottom edge of sleeve. Next row (WS): Selvage st, p1, * k2, p2; rep from * to last 4 sts, k2, p1, selvage st. Cont in rib patt as established until cuff meas 5 cm. Bind off all sts in rib. Sew side and sleeve seams.



Back and front, half

Sleeve, half

Chart:

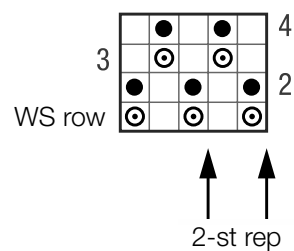


Chart key:

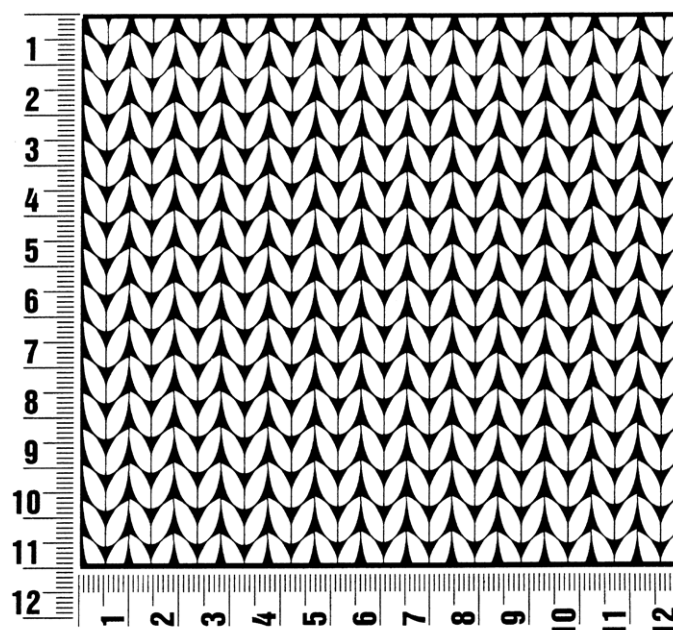
- = k1
- ⊙ = make a yo, then sl next st pwise
- = ktgl slipped st with its yo

Design 04 - hand-dyed Flyer

Gauge Swatch

Before you begin ...

...make a gauge swatch. Use the recommended needles, yarns and pattern stitch for your gauge swatch. It should measure approx. 12 cm x 12 cm. Cast-on and bind-off rows, as well as selvage stitches should not be included in the measurement. Pin your swatch and block it as you would the finished pieces of the garment. Count stitches and rows over 10 cm. If your gauge swatch is too small, switch to larger needles. If your gauge swatch is too big, switch to smaller needles.



Abbreviations

beg = begin(ning) · **ch** = chain · **cont** = continue · **dec** = decreas(e)(ing) · **inc** = increas(e)(ing) · **k** = knit · **kwise** = as if to knit
meas = measures · **M1L** = lift strand between sts from front to back and knit this strand through the back loop · **M1R** = lift strand between sts from the back and knit this strand through the front loop · **patt** = pattern · **pm** = place marker · **p** = purl
pwise = as if to purl · **rem** = remain(ing) · **rep** = repeat(s) · **rev St st** = reverse stockinette stitch · **rnd(s)** = round(s) · **RS** = right side · **sc** = single crochet · **skp** = slip 1 stitch as if to knit, knit 1 stitch, pass slipped stitch over knitted stitch · **sk2p** = slip 1 stitch as if to knit, knit 2 together, pass slipped stitch over knitted stitch · **s2kp** = slip 2 stitches as if to knit, k 1 stitch, pass slipped stitches over knitted stitch · **sl** = slip · **st(s)** = stitch(es) · **St st** = stockinette stitch · **tbl** = through the back loop · **tog** = together · **wyib** = with yarn in back of work · **wyif** = with yarn in front of work · **WS** = wrong side · **yo(s)** = yarn over(s)

Publisher's Info

Publisher: Lana Grossa GmbH, Gaimersheim, www.lanagrossa.com

Photographer: Wilfried Wulff, www.wilfriedwulff.com