



[www.lanagrossa.com](http://www.lanagrossa.com)



**PULLOVER · SILKHAIR HAND-DYED &  
COOL WOOL HAND-DYED**  
Design 03 - hand-dyed Flyer

# PULLOVER · SILKHAIR HAND-DYED & COOL WOOL HAND-DYED

## Design 03 - hand-dyed Flyer



**Size** 36/38 (40/42, 44)

Instructions are given for first size. Figures in parenthesis refer to larger sizes. When only one figure is given, it applies to all sizes.

**Materials:** 400 (500, 500) g of Lana Grossa **Cool Wool hand-dyed** (100% pure wool; 320 m/100 g) in Kerala (**col 110**) and 50 g of Lana Grossa **Silkhair hand-dyed** (70% superkid mohair, 30% silk; 400 m/50 g) in Champa (**col 607**). Size 3.5 and 4.5 mm needles; size 4 mm circular needle, 40 cm long; cable needle [cn].

**2x3 rib:** P2, k3.

**2x2 rib:** P2, k2.

**St st:** K on RS, p on WS.

**Rev St st:** P on RS, k on WS.

**Texture patt:** Multiple of 2 + 2 selvage sts. **Row 1 (RS):** Selvage st, skip next st; working behind skipped st, ktbl next st, pass 2nd st over first st, knit first st; rep from \*, end selvage st. **Row 2 (WS):** Purl all sts. Rep rows 1 and 2 for texture patt.

**Main patt:** \* 18 rows in St st with Cool Wool hand-dyed, 8 rows in texture patt with Silkhair hand-dyed = 26 rows. Rep from \* throughout.

**Full-fashion decrease 1:** At beg of RS row, selvage st, sl 2 sts to cn and hold in back of work, k2tog, then k2tog from cn; at end of RS row, work to last 5 sts, sl 2 sts to cn and hold in front of work, skp, then k2tog from cn, selvage st – 2 sts decreased at each edge.

**Full-fashion decrease 2:** At beg of RS row, selvage st, 4 sts in rev St st, sl 2 sts to cn and hold in back of work, k2tog, then k2tog from cn; at end of RS row, work to last 9 sts, sl 2 sts to cn and hold in front of work, skp, then k2tog from cn, 4 sts in rev St st, selvage st – 2 sts decreased at each edge.

**Full-fashion increase:** On RS row: M1R, 2 sts in from each edge.

**Gauge:** 22 sts and 28 rows = 10 x 10 cm in main patt on size 4.5 mm needles.

**Back:** With size 3.5 mm needles and Cool Wool hand-dyed cast on 152 (162, 172) sts. Next row (WS): Selvage st, k1, \* p3, k2; rep from \* to last 5 sts, p3, k1, selvage st. Cont in 2x3 rib as established until piece meas 10 cm from cast-on,

decreasing 38 (40, 42) sts evenly across last WS row = 114 (122, 130) sts. Change to size 4.5 mm needles. Work in main patt and shape sides as foll: Working full-fashion inc, inc 1 st at each end of 11th row, then every 10th row 2 times = 120 (128, 136) sts. Work even until piece meas 24 cm from cast-on, ending with a WS row. Shape raglan: Bind off 2 sts at beg of next 2 rows. Working full-fashion dec 1, dec 2 sts at each end of every alt 4th and 6th row 14 (10, 6) times, then every 4th row 3 (9, 15) times = 48 sts. Work 1 WS row. Place sts on holder.

**Front:** Work same as back to raglan shaping, ending with a WS row. Shape raglan: Bind off 2 sts at beg of next 2 rows. Working full-fashion dec 1, dec 2 sts at each end of every alt 4th and 6th row 14 (10, 6) times, then every 4th row 1 (7, 13) time(s) and at same time, when piece meas 50 (51, 52) cm from cast-on, shape neck as foll: Next row (RS): Bind off center 36 sts. Working each side separately, bind off 5 sts at each neck edge 2 times.

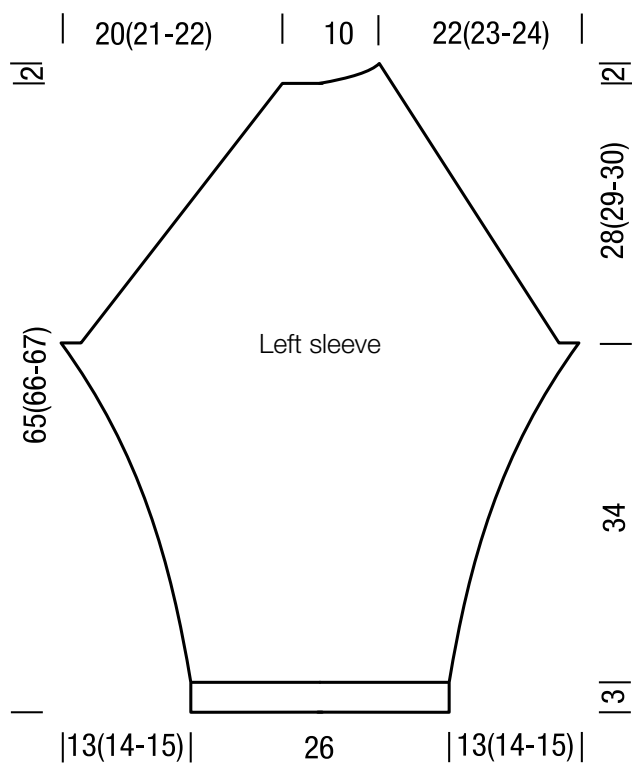
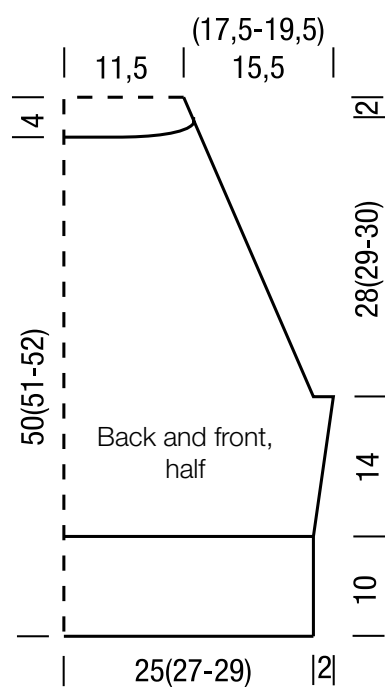
**Left sleeve:** With size 3.5 mm needles and Cool Wool hand-dyed cast on 62 sts. Next row (WS): Selvage st, p1, \* k2, p2; rep from \* to last 4 sts, k2, p1, selvage st. Cont in 2x2 rib as established until piece meas 3 cm from cast-on, ending with a WS row. Change to size 4.5 mm needles. Work in main patt and shape sleeve as foll: Working full-fashion inc, inc 1 st at each end of 5th row, then every 4th row 12 (9, 5) times, then every alt 2nd and 4th row 10 (12, 16) times, then every alt row 6 (9, 11) times = 120 (124, 128) sts. Work even until piece meas 37 cm from cast-on, ending with a WS row. Shape sleeve cap: Bind off 2 sts at beg of next 2 rows. Working full-fashion dec 2, dec 2 sts at each end of every 4th row 14 (14, 14) times, then every alt 2nd and 4th row 8 (9, 10) times = 28 sts. Next row (RS): Dec 2 sts at beg of row, work to end. Next row (WS): Bind off 8 sts, work to end. Next row (RS): Dec 2 sts at beg of row, work to end. Next row (WS): Bind off 8 sts, work to end. Next row (RS): Work even. Next row (WS): Bind off rem 8 sts.

**Right sleeve:** Work same as left sleeve, reversing cap shaping.

**Finishing:** Pin pieces to measurements and block. Sew raglan, side and sleeve seams. **Neckband:** With size 4 mm circular needle and Cool Wool hand-dyed, pick up and k 150 sts evenly around neck edge, including sts on back neck holder. Place beg of rnd marker and join for working in rnds. Work 2x3 rib in rnds for 7 cm. Loosely bind off all sts in rib. Fold neckband in half to WS and sew down.

# PULLOVER · SILKHAIR HAND-DYED & COOL WOOL HAND-DYED

## Design 03 - hand-dyed Flyer

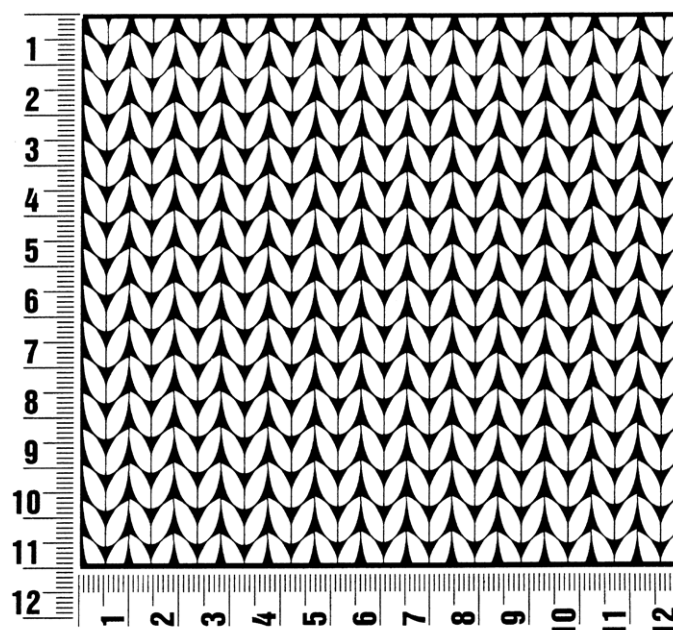


# Design 03 - hand-dyed Flyer

## Gauge Swatch

### Before you begin ...

...make a gauge swatch. Use the recommended needles, yarns and pattern stitch for your gauge swatch. It should measure approx. 12 cm x 12 cm. Cast-on and bind-off rows, as well as selvage stitches should not be included in the measurement. Pin your swatch and block it as you would the finished pieces of the garment. Count stitches and rows over 10 cm. If your gauge swatch is too small, switch to larger needles. If your gauge swatch is too big, switch to smaller needles.



## Abbreviations

**beg** = begin(ning) · **ch** = chain · **cont** = continue · **dec** = decreas(e)(ing) · **inc** = increas(e)(ing) · **k** = knit · **kwise** = as if to knit  
**meas** = measures · **M1L** = lift strand between sts from front to back and knit this strand through the back loop · **M1R** = lift strand between sts from the back and knit this strand through the front loop · **patt** = pattern · **pm** = place marker · **p** = purl  
**pwise** = as if to purl · **rem** = remain(ing) · **rep** = repeat(s) · **rev St st** = reverse stockinette stitch · **rnd(s)** = round(s) · **RS** = right side · **sc** = single crochet · **skp** = slip 1 stitch as if to knit, knit 1 stitch, pass slipped stitch over knitted stitch · **sk2p** = slip 1 stitch as if to knit, knit 2 together, pass slipped stitch over knitted stitch · **s2kp** = slip 2 stitches as if to knit, k 1 stitch, pass slipped stitches over knitted stitch · **sl** = slip · **st(s)** = stitch(es) · **St st** = stockinette stitch · **tbl** = through the back loop · **tog** = together · **wyib** = with yarn in back of work · **wyif** = with yarn in front of work · **WS** = wrong side · **yo(s)** = yarn over(s)

### Publisher's Info

**Publisher:** Lana Grossa GmbH, Gaimersheim, www.lanagrossa.com

**Photographer:** Wilfried Wulff, www.wilfriedwulff.com