



[www.lanagrossa.com](http://www.lanagrossa.com)



# **SPIRAL SOCKS MEILENWEIT 6-PLY**

# SPIRAL SOCKS

## MEILENWEIT 6-PLY



www.lanagrossa.com

### BASIC INSTRUCTIONS

#### Spiral socks (socks without a heel)

Spiral socks are a perfect project for beginners since they are worked without a heel and fit perfectly.

These basic instructions are for size 38/39 socks worked in Lana Grossa **Meilenweit 6-ply** (390 m/150 g) on size 3 – 4 mm needles. Please refer to the size chart for additional sizes.

#### CAST-ON:

Cast on 48 sts. Arrange sts evenly on 4 needles = 12 sts per needle. Place beg of rnd marker and join for working in rnds. Beg of rnd is between first and 4th needle at back of sock.

#### LEG AND FOOT:

**Rnds 1 – 4:** \* K2, p2; rep from \* around.

**Rnds 5 – 8:** P1, \* k2, p2; rep from \* around, end k2, p1.

**Rnds 9 – 12:** \* P2, k2; rep from \* around.

**Rnds 13 – 16:** K1, \* p2, k2; rep from \* around, end p2, k1.

Rep rnds 1 – 16 for desired length.

#### SHAPED TOE:

Worked in St st.

Dec rnd 1: Knit to last 3 sts on first needle, k2tog, knit last st on first needle; knit first st on 2nd needle, sl 1 kwise, k1, pass slipped st over knitted st, knit to last 3 sts on 3rd needle, k2tog, knit last st on 3rd needle; knit first st on 4th needle, sl 1 kwise, k1, pass slipped st over knitted st, work to end. Rep dec rnd every 3rd rnd once, then every other rnd 4 times, then every rnd until 8 sts rem. Work all other rnds even in St st. Cut yarn, draw yarn end twice through rem 8 sts and pull tight. Weave in ends.

# SPIRAL SOCKS MEILENWEIT 6-PLY

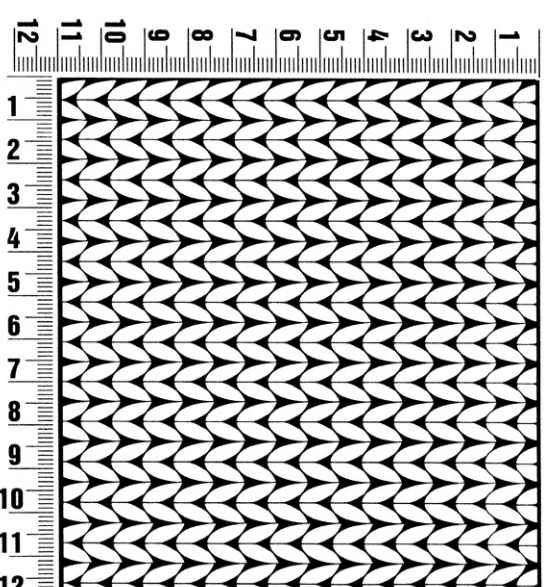


[www.lanagrossa.com](http://www.lanagrossa.com)

## Gauge Swatch

### Before you begin ...

...make a gauge swatch. Use the recommended needles, yarns and pattern stitch for your gauge swatch. It should measure approx. 12 cm x 12 cm. Cast-on and bind-off rows, as well as selvage stitches should not be included in the measurement. Pin your swatch and block it as you would the finished pieces of the garment. Count stitches and rows over 10 cm. If your gauge swatch is too small, switch to larger needles. If your gauge swatch is too big, switch to smaller needles.



### Size chart for spiral socks worked in Meilenweit 6-ply 390m/50g

Gauge: 21 sts and 27 rows/rnds = 10 x 10 cm

Size	22/23	24/25	26/27	28/29	30/31	32/33	34/35	36/37	38/39	40/41	42/43	44/45	46/47
Sis to cast on / sts per needle	32/8	36/9	36/9	40/10	40/10	44/11	44/11	48/12	48/12	52/13	52/13	56/14	56/14
Toe decs on 3rd rnd after first dec rnd								1x	1x	1x	1x	1x	1x
Every other rnd	2x	3x	3x	3x	3x	4x	4x	4x	4x	4x	4x	4x	4x
Every rnd	3x	3x	3x	4x	4x	4x	4x	4x	4x	5x	5x	6x	6x
Total length of foot in cm	14,5	15,5	17	18	19,5	21	22	23,5	25	26,5	27,5	28,5	30

**PUBLISHER'S INFO: Publisher:** Lana Grossa GmbH, Gaimersheim, [www.lanagrossa.com](http://www.lanagrossa.com)

© All designs are copyrighted. No material herein may be reproduced in any form by any means without the express written consent of the publisher.