



www.lanagrossa.com



SOCKS WITH CLASSIC HEEL MEILENWEIT 6-PLY FANTASY

SOCKS WITH CLASSIC HEEL MEILENWEIT 6-PLY FANTASY



www.lanagrossa.com

BASIC INSTRUCTIONS

Socks with classic heel

These basic instructions are for size 38/39 socks worked in Lana Grossa **Meilenweit 6-ply Fantasy** (390 m/150 g) on size 3 – 4 mm needles. Please refer to the size chart for additional sizes.

CAST-ON:

Cast on 48 sts. Arrange sts evenly on 4 needles = 12 sts per needle. Place beg of rnd marker and join for working in rnds. Beg of rnd is between first and 4th needle.

LEG:

Work in k1, p1 rib for a few centimeters, then cont in rib patt or in St st or in patt as desired or according to instructions. After the leg has been worked, cont to work sts on 2nd and 3rd needle in established patt for top of foot, work sts on first and 4th needle in St st for heel and sole. Some patts may require an adjustment to the stitch count given in the size chart to account for the multiples of the patt.

HEEL:

When leg meas approx. 20 cm from cast-on, work heel as foll: Leaving sts on 2nd and 3rd needle on hold, work across the 24 sts on first and 4th needle in St st back and forth in rows for 22 rows.

Mark center 8 sts. Next RS row: * Work to last center st, sl last center st kwise, k next st, pass slipped st over knitted st, turn, slip 1 st pwise, p to last center st, ptog last center st and next st, turn, slip 1 st pwise. Repeat from * until only center 8 sts remain. Next rnd: Work to center of heel; with free needle, work 2nd half of the heel sts, pick up and knit 1 st in every other row along left side of heel, M1R = 12 sts; with free needle, work across sts on 2nd needle; with free needle, work across sts on 3rd needle; with free needle, M1R, pick up and knit 1 st in every other row along right side of heel = 12 sts, work sts on 4th needle. Cont working in rnds, working sts on first and 4th needle in St st and sts on 2nd and 3rd needle in established patt and work gusset decreases every

3rd rnd as foll: Knit to last 3 sts on first needle, k2tog knit last st on first needle, work to end of 3rd needle, knit first st on 4th needle, sl next st kwise, k next st, pass slipped st over knitted st, work to end. Rep dec rnd every 3rd rnd until 48 sts are on the needles.

FOOT:

Working sts on first and 4th needle in St st and sts on 2nd and 3rd needle in established patt cont until foot meas approx. 20 cm from center of heel.

TOE:

Worked in St st.

Dec rnd 1: Knit to last 3 sts on first needle, k2tog, knit last st on first needle; knit first st on 2nd needle, sl 1 kwise, k1, pass slipped st over knitted st, knit to last 3 sts on 3rd needle, k2tog, knit last st on 3rd needle; knit first st on 4th needle, sl 1 kwise, k1, pass slipped st over knitted st, work to end. Rep dec rnd every 3rd rnd once, then every other rnd 4 times, then every rnd until 8 sts rem. Work all other rnds even in St st. Cut yarn, draw yarn end twice through rem 8 sts and pull tight. Weave in ends.

SOCKS WITH CLASSIC HEEL

MEILENWEIT 6-PLY FANTASY



www.lanagrossa.com

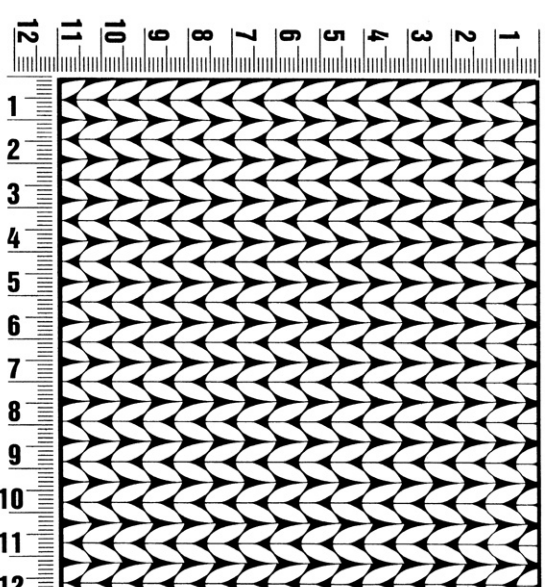
Gauge Swatch

Before you begin ...

...make a gauge swatch. Use the recommended needles, yarns and pattern stitch for your gauge swatch. It should measure approx. 12 cm x 12 cm. Cast-on and bind-off rows, as well as selvage stitches should not be included in the measurement. Pin your swatch and block it as you would the finished pieces of the garment. Count stitches and rows over 10 cm. If your gauge swatch is too small, switch to larger needles. If your gauge swatch is too big, switch to smaller needles.

Size chart for socks with classic heel worked in Meilenweit 6-ply 390m/50g

Gauge: 21 sts and 27 rows/rnds = 10 x 10 cm



Size	22/23	24/25	26/27	28/29	30/31	32/33	34/35	36/37	38/39	40/41	42/43	44/45	46/47
Sts to cast on/sts per needle	32/8	36/9	36/9	40/10	40/10	44/11	44/11	48/12	48/12	52/13	52/13	56/14	56/14
Sts for heel	16	18	18	20	20	22	22	24	24	26	26	28	28
Rows for heel	14	16	16	18	18	20	20	22	22	24	24	26	26
Heel sts before and after center section	6	6	6	8	8	8	8	8	8	10	10	10	10
Gusset sts to be picked up	8	9	9	10	10	11	11	12	12	13	13	14	14
Length from center of heel to beginning of toe in cm	12	12	13,5	14	15	16,5	17	18	20	21,5	22,5	23	24,5
Toe decs on 3rd rnd after first dec rnd								1x	1x	1x	1x	1x	1x
Every other rnd	2x	3x	3x	3x	3x	4x	4x	4x	4x	4x	4x	4x	4x
Every rnd	3x	3x	3x	4x	4x	4x	4x	4x	4x	5x	5x	6x	6x
Total length of foot in cm	14,5	15,5	17	18	19,5	21	22	23,5	25	26,5	27,5	28,5	30